

# American Oak

## Botanical Name: Quercas Rubra

A light to medium brown heartwood with slight pink undertones and sapwood in white to light brown tones. The grain is straight but with a coarse, uneven texture and large pores.

It is rated as non-durable and can stain when in contact with water, particularly the porous growth ring areas.

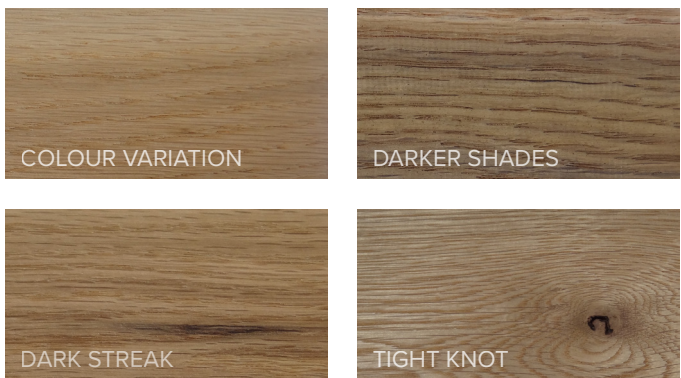
### Colour Variation



When specifying timber products, it's important to know that timber naturally varies in colour leading to slight differences in hue.

\*Colours shown above are a representative only.

### Typical Characteristics



Origin	North America
Species Type	Hardwood
Sustainability	FSC certified only on request
Availability	Readily available
Durability	Above ground - Class 3
Hardness	Janka 5.73kN
Density (dry)	730kg/m <sup>3</sup>
Movement	High tangential 6.6% (shrinkage across the board width)
Lyctid Susceptibility	Susceptible
Termite Resistance	Not resistant
Fire	Satisfies BCA C1.10a Group 3
Lengths	Average length 2.0m - 2.2m (this can vary depending on availability)
Typical Applications	Internal cladding/battens, and sheltered exteriors.
Cut	Plain Sawn



sculptform.com | support@sculptform.com

REFERENCES: Wood Solutions (www.woodsolutions.com.au); Australian Standards AS5604-2005; Wood in Australia by Keith R. Bootle 2002 ISBN 0 07 451047 9.; Australian Standards AS 3959-2009

NOTE: To maintain currency, this document is periodically reviewed, and new editions are published. Between editions, amendments may be issued, so its important that readers assure themselves they are using a current document. We welcome suggestions for improvement, and encourage readers to notify us immediately of any apparent inaccuracies or ambiguities. Contact us via email support@sculptform.com

Available on request.  
The FSC® label means that materials used for this product have been responsibly sourced.





# Timber Grading

At Sculptform, we adhere to the Australian standard **AS 2796.2-2006** when grading our timber. These grades primarily consider aesthetic attributes like knots and gum veins. To ensure a harmonious blend of the timber's natural appeal and uniformity across the project, we maintain a strict ratio in each order: a minimum of 2/3 select grade and 1/3 standard grade, which we refer to as **'Natural Select'**. Below, we outline the acceptable characteristics of each grade for clarity.

## Select Grade

Select Grade timber offers the cleanest appearance with minimal visual features, foregoing some of the timber's natural variation.

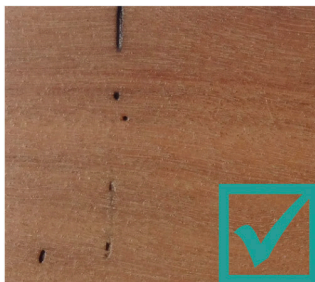
**Your Sculptform order will include at least two-thirds of Select Grade timber.**



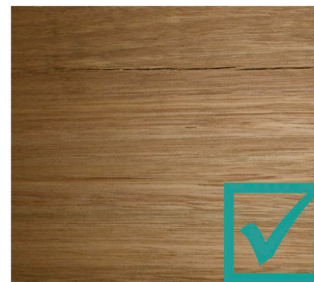
**Gum Veins** of less than 250mm in length and 2mm in width are acceptable.



**Tight Knots** of less than 15mm in width are acceptable.



**Borer Holes** are acceptable provided there are less than 10 holes per 900mm depending on width.

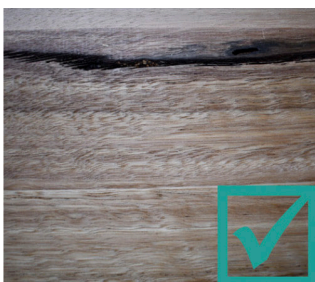


**Checking** is acceptable provided individual length does not exceed 250mm and width does not exceed 1mm.

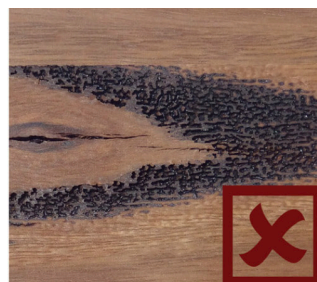


## Standard Grade

Standard Grade timber provides a more natural aesthetic with larger and more frequent features, enhancing the timber's character and emphasizing its natural look and feel. **Your Sculptform order will include a maximum of one-third Standard Grade timber.**



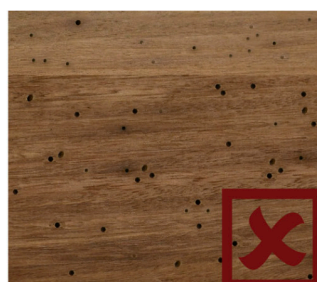
**Gum Veins** of less than 1m in length and 60mm in width are acceptable and less than 2mm in depth.



**Tight Knots** of less than 40mm in width are acceptable.



**Borer Holes** are acceptable provided there are less than 24 holes per 900mm depending on width.



**Checking** is acceptable provided individual length does not exceed 250mm and width does not exceed 2mm.

