

Grandis

Botanical Name: Eucalyptus Grandis

Also known as Flooded Gum, Scrub Gum or Rose Gum, originally native to Australia, Eucalyptus Grandis is a sustainable plantation grown FSC timber grown around the world. It ranges from blond/subtle pink tones to a warm, pink tones. The grain is usually straight with shallow interlocking, and machines exceptionally well.

Colour Variation



When specifying timber products, it's important to know that timber naturally varies in colour leading to slight differences in hue.

*Colours shown above are a representative only.

Typical Characteristics



COLOUR VARIATION



TIGHT KNOT



DARKER GRAIN STREAKS



TIGHT KNOT

Origin	Native to Australia, Plantation grown in Uruguay
Species Type	Hardwood
Sustainability	FSC® 100% Certified
Availability	Good
Durability	Class 2 (EN 350:2016)
Modulus of Elasticity	13GPa
Modulus of Rapture	87.4 MPa
Hardness	Janka 5.2 kN ⁽⁴⁾
Density @ 12% MC	600 kg/m ³ ⁽¹⁾
Movement	14.3% Tangential ⁽²⁾
Lyctid Susceptibility	Unknown
Termite Resistance	Moderate. Can be H3 treated (TruCore)
Fire	AS 5637.1: Group3. ASEA 4.6 m2/kg ⁽³⁾
Lengths	Typically 2.4m, 3m and 3.2m
Typical Applications	Internal and sheltered external cladding and battens. Full exterior available with H3 treatment (TruCore)



sculptform.com | support@sculptform.com

REFERENCES: (1) Microsoft Word - WS-45 martin sanchez paper.doc (psu.edu), Rose Gum | The Wood Database (Hardwood) (wood-database.com); (2) Microsoft Word - WS-45 martin sanchez paper.doc (psu.edu); (3) AWTA AS 5637.1-2015 Test Number: 23-003858; (4) Microsoft Word - WS-45 martin sanchez paper.doc (psu.edu). (Needs to be tested and confirmed as the density of samples received is lower than those from the database).

NOTE: To maintain currency, this document is periodically reviewed, and new editions are published. Between editions, amendments may be issued, so its important that readers assure themselves they are using a current document. We welcome suggestions for improvement, and encourage readers to notify us immediately of any apparent inaccuracies or ambiguities. Contact us via email support@sculptform.com

Available on request.
The FSC® label means that materials used for this product have been responsibly sourced.



Timber Grading

At Sculptform, we adhere to the Australian standard **AS 2796.2-2006** when grading our timber. These grades primarily consider aesthetic attributes like knots and gum veins. To ensure a harmonious blend of the timber's natural appeal and uniformity across the project, we maintain a strict ratio in each order: a minimum of 2/3 select grade and 1/3 standard grade, which we refer to as **'Natural Select'**. Below, we outline the acceptable characteristics of each grade for clarity.

Select Grade

Select Grade timber offers the cleanest appearance with minimal visual features, foregoing some of the timber's natural variation.

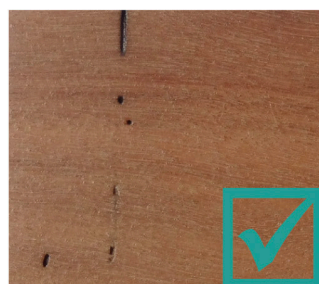
Your Sculptform order will include at least two-thirds of Select Grade timber.



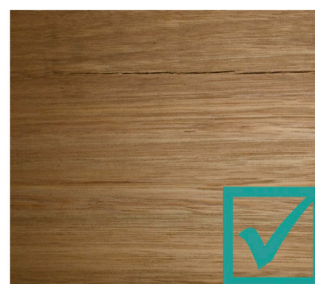
Gum Veins of less than 250mm in length and 2mm in width are acceptable.



Tight Knots of less than 15mm in width are acceptable.



Borer Holes are acceptable provided there are less than 10 holes per 900mm depending on width.



Checking is acceptable provided individual length does not exceed 250mm and width does not exceed 1mm.



Standard Grade

Standard Grade timber provides a more natural aesthetic with larger and more frequent features, enhancing the timber's character and emphasizing its natural look and feel. **Your Sculptform order will include a maximum of one-third Standard Grade timber.**



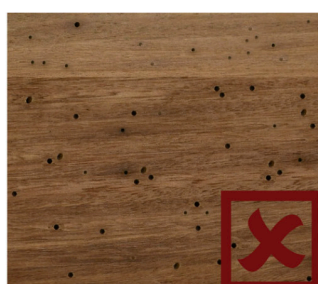
Gum Veins of less than 1m in length and 60mm in width are acceptable and less than 2mm in depth.



Tight Knots of less than 40mm in width are acceptable.



Borer Holes are acceptable provided there are less than 24 holes per 900mm depending on width.



Checking is acceptable provided individual length does not exceed 250mm and width does not exceed 2mm.

