

# Spotted Gum

## Botanical Name: *Eucalyptus Maculata*

Spotted Gum displays a wide colour range depending on the source forest, from light brown to deep red-brown, often with white to light brown streaks up to 50mm wide. It has a moderately coarse, uneven texture, and some pieces feature a wavy grain that creates a striking fiddleback figure.

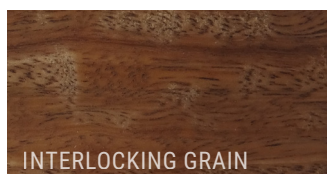
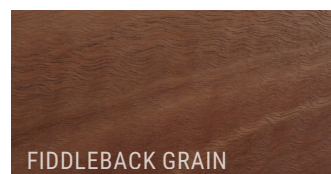
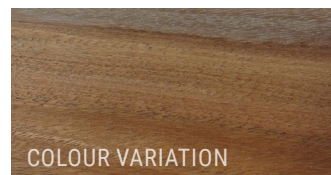
### Colour Variation



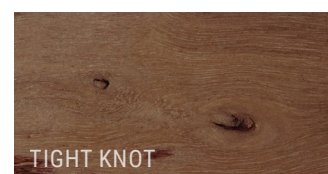
When specifying timber products, it's important to know that timber naturally varies in colour leading to a range of differences in hue.

\*Colours shown above are a representative only.

### Typical Characteristics



Origin	New South Wales and Queensland
Species Type	Hardwood
Sustainability	<b>ON REQUEST ONLY.</b> Available in PEFC 21-31-167 with a Chain of Custody for Green Star points.
Availability	Readily available
Durability	Class 1 – greater than 40 years
Hardness	Janka 11
Density (dry)	990kg/m <sup>3</sup>
Movement	Medium tangential 6.1% (shrinkage across the board width)
Treatment	ACQH3
Lyctid Susceptibility	Susceptible
Termite Resistance	Resistant
Fire	Satisfies BAL 12.5, 19 and 29 under AS3959-2009. Satisfies BCA C1.10a Group 3
Lengths	Average length 2.4m (this can vary depending on availability)
Typical Applications	Internal cladding and battens External cladding and battens



sculptform.com | support@sculptform.com

REFERENCES: Wood Solutions ([www.woodsolutions.com.au](http://www.woodsolutions.com.au)); Australian Standards AS5604-2005; Wood in Australia by Keith R. Bootle 2002 ISBN 0 07 451047 9; Australian Standards AS 3959-2009

NOTE: To maintain currency, this document is periodically reviewed, and new editions are published. Between editions, amendments may be issued, so it's important that readers assure themselves they are using a current document. We welcome suggestions for improvement, and encourage readers to notify us immediately of any apparent inaccuracies or ambiguities. Contact us via email [support@sculptform.com](mailto:support@sculptform.com)

On request only.  
Available in  
PEFC/Responsible  
Wood with a Chain  
of Custody for  
Green Star points.





# Timber Grading

At Sculptform, we adhere to the Australian standard **AS 2796.2-2006** when grading our timber. These grades primarily consider aesthetic attributes like knots and gum veins. To ensure a harmonious blend of the timber's natural appeal and uniformity across the project, we maintain a strict ratio in each order: a minimum of 2/3 select grade and 1/3 standard grade, which we refer to as **'Natural Select'**. Below, we outline the acceptable characteristics of each grade for clarity.

## Select Grade

Select Grade timber offers the cleanest appearance with minimal visual features, foregoing some of the timber's natural variation.

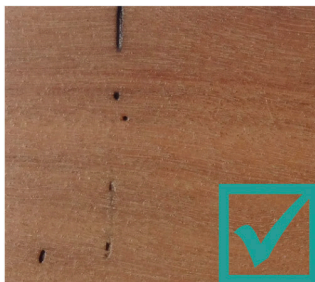
**Your Sculptform order will include at least two-thirds of Select Grade timber.**



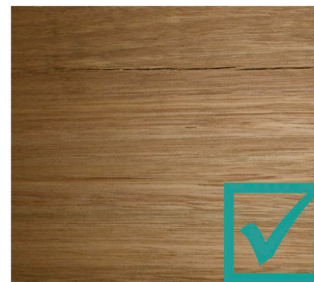
**Gum Veins** of less than 250mm in length and 2mm in width are acceptable.



**Tight Knots** of less than 15mm in width are acceptable.



**Borer Holes** are acceptable provided there are less than 10 holes per 900mm depending on width.

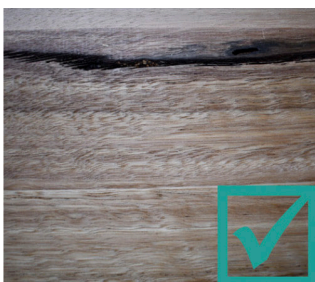


**Checking** is acceptable provided individual length does not exceed 250mm and width does not exceed 1mm.

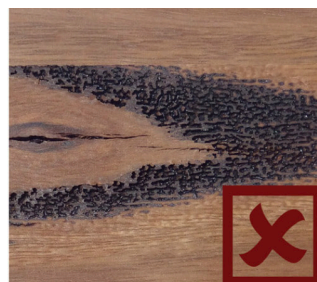


## Standard Grade

Standard Grade timber provides a more natural aesthetic with larger and more frequent features, enhancing the timber's character and emphasizing its natural look and feel. **Your Sculptform order will include a maximum of one-third Standard Grade timber.**



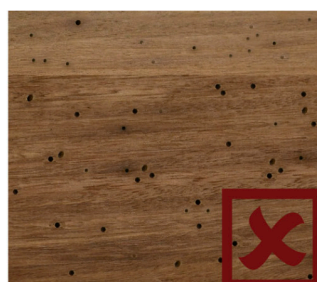
**Gum Veins** of less than 1m in length and 60mm in width are acceptable and less than 2mm in depth.



**Tight Knots** of less than 40mm in width are acceptable.



**Borer Holes** are acceptable provided there are less than 24 holes per 900mm depending on width.



**Checking** is acceptable provided individual length does not exceed 250mm and width does not exceed 2mm.

