



Wood Finish Aluminium

TECHNICAL DATASHEET

Wood Finish Aluminium

Providing the beautiful, natural look of timber whilst avoiding hassles such as fire compliance and maintenance schedules, our Wood Finish Aluminium battens offer value to specifiers, designers and clients alike.

A range of benefits over other wood-look alternatives, such as powder coating, wrapped aluminium provides far better fade resistance under UV exposure (see page 5 for details), a high quality textured finish, all while maintaining minimal environmental impact.

Film Structure

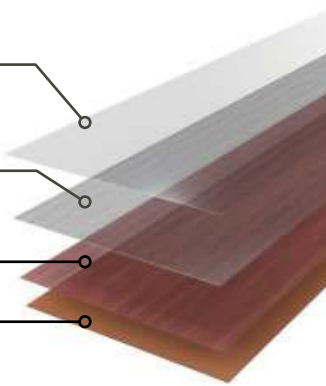
By applying a top coat with special cross-link structure, our Wood Finish aluminium provides superior weather and marring resistance. Polyolefin resin is used for the base of the film providing an environmentally friendly product.

EB Coating

Transparent embossed Olefin film

Printed layer (realistic wood design)

Olefin film base



Suitable Applications

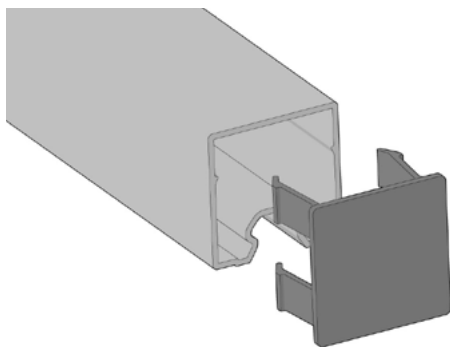
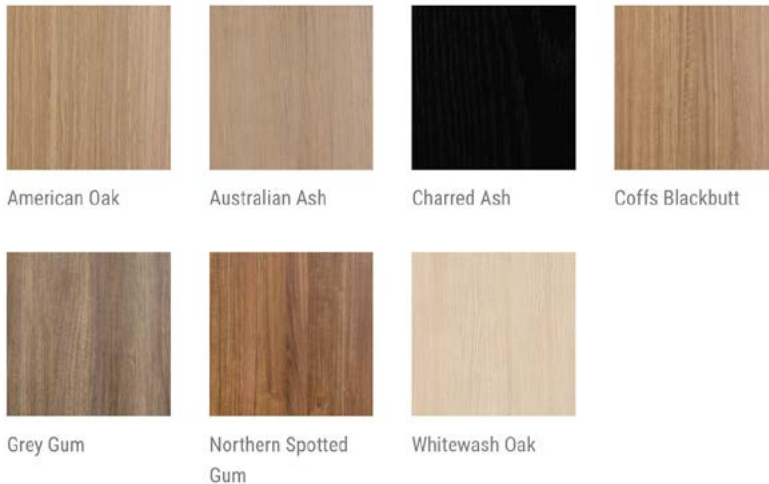
- Used for decorative wall and ceiling linings for internal and external applications
- Can be used as a finish with our Click-on Battens, Click-on Cladding and Click-on Screen systems in all profiles and sizes
- When Group 1 fire compliance is required for a project
- To minimise maintenance of an exterior project
- For large blade sizes, offering an lightweight alternative to timber

Product Specifications

Product Name	Wood Finish Aluminium
Material	Polyolefin Exterior Film
Country of Origin	Japan
Thickness	0.15mm
Glue	Polyurethane Reactive (PUR) Hot Melt
Pattern	1200mm in length. A textured surface with a matt finish. Wood grain running the length of batten.
Weather Resistance	Tested under accelerated weather conditions in a S.W.O.M in accordance with JIS A1415 for 4000 hours. No noticeable colour change or fading. See page 5 for more information.
Wear Resistance	Taber Abrasion tester with 500g load of S-42 sandpaper after 100 cycles. Printed layer is not affected.
Heat/Moisture Resistance	Thermo-hygrostat at 60±2°C, 95±2%RH for 72 hours. No noticeable change of surface.
Coefficient of thermal contraction (shrinkage)	Vertical: less than 0.5% Horizontal: less than 0.5%
Fire Ratings	<p>In accordance with AS 5637.1-2015 Classification: Group 1</p> <p>Determination of Ignitability, Flame Propagation, Heat Release and Smoke Release.</p> <p>Spread of Flame Index: 0 Ignitability Index: 11 Heat Evolved Index: 1 Smoke Developed Index: 4</p> <p>The material is NOT deemed COMBUSTIBLE according to the test criteria specified in Clause 3.4 of AS 1530.1-1994</p>
Warranty	10 year manufacturer's warranty

Colour Options

Our range of wood finishes are custom designed to match the texture and colours of real timber. Product samples are available for accurate colour selection.



Batten End Caps

End caps are powder coated to match each individual wood finish colour. Can also be wrapped in Wood Finish.

Maintenance and Cleaning

Surface dirt/dust, spider webs, bird droppings, rain spots and other debris, while not harmful can be unattractive and detract from the visual appeal of the battens. We recommend a visual inspection every 6-12 months. When used near coastal environments, an inspection every 3-6 months may be necessary to remove salt, visual deposits etc.

Please consider the following:

- When cleaning, a soft cloth or sponge can be used with a diluted neutral detergent or water. When using a neutral detergent, rinse thoroughly with water so that the detergent does not remain, and then wipe dry.
- Remove pebbles and sand adhering to the surface before cleaning.
- Do not rub with excessive force when cleaning.
- Do not clean with harsh chemicals other than organic solvents and neutral detergents,
- Do not clean with a abrasive methods such as a rotating brush, sandpaper, steel wool etc.
- Remove dirt as soon as possible.

Sculptform Wood Finish Performance to AAMA 2605-22

Test	Reference	Result
Dry Adhesion	AAMA 2605-22, Section 8.4.2.1	Pass
Impact Resistance	AAMA 2605-22, Section 8.5.2	Pass
Humidity Resistance	AAMA 2605-22, Section 8.8.1	Pass
Falling Sand Abrasion	AAMA 2605-22, Section 8.6.2	Pass
Mortar Resistance	AAMA 2605-22, Section 8.7.2	Pass
Chemical Resistance	AAMA 2605-22, Section 8.7.4	Pass
Corrosion Resistance	AAMA 2605-22, Section 8.8.2	Pass

VOC Emissions

Wood Finish meets the requirements of the California Department of Health requirements to:

Standard Method for the Testing and Evaluation of Volatile Organic Chemical Emissions from Indoor Sources Using Environmental Chambers, Version 1.2: 2017 (*Emission testing method for California Specification CA 01350*).

Emission Data (336 hours)

California Specification CA 01350	Extruded Aluminium with Wood Finish
TVOC Emission Rate Limit: <1.600 mg/m ³	TVOC Emission Rate*: 0.038 mg/m ³
Formaldehyde Emission Rate Limit: <9 ug/m ³	Formaldehyde Emission Rate*: <3 ug/m ³

All other Target CREL VOCs and their emission rate are well below the maximum allowable concentrations in accordance with Table 4-1 of the standard method (please see it in Annex 1 below).

Declare

Sculptform Wood Finish is LBC REDLIST DECLARED. [Find out more details here.](#)

Scratch Resistance

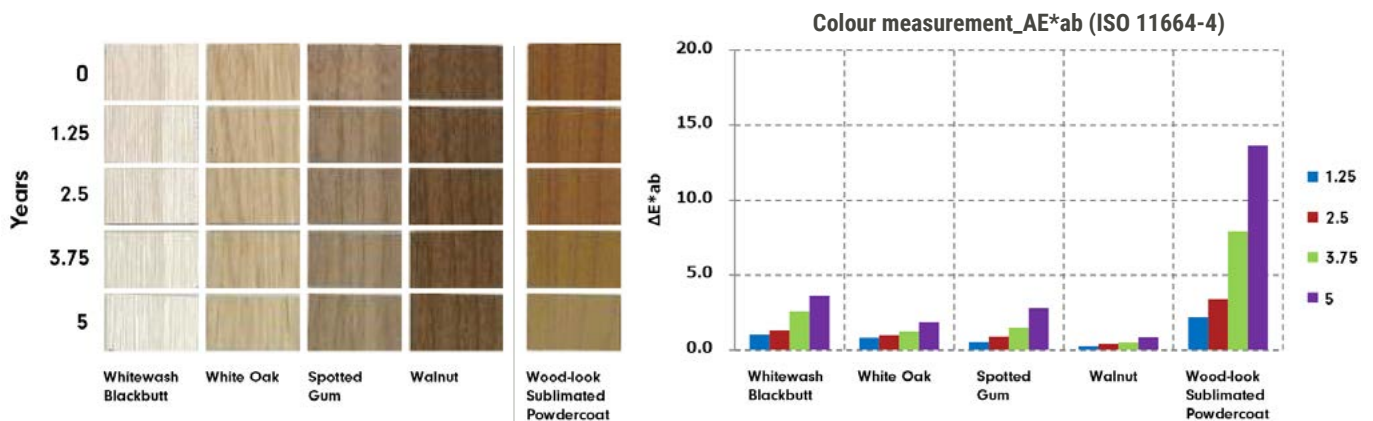
Hoffmann scratch test results indicate little to no marks on the Polyolefin Exterior Film after rigorous testing. Other Olefin sheets show significant marks when tested under the same conditions.



Colour Fade Test Results

We have weather tested our Wood Finish Aluminium extensively, and they have proven to be **up to 3 times more resistant to fading than other timber-look aluminium products on the market.**

Fading was measured due to weather exposure over a 5 year period. These test results indicate the colour change in both our wood finish, and a powder coat wood look product.



Environmental Impact

Our finishes are comprised of environmentally friendly materials and do not include PVC, Toulene or Xylene. Low VOC (Volatile Organic Compounds) emissions are generated in the process of manufacturing the finish, and in the wrapping process.

Enquiries

For further information about our Wood Finish Aluminium or any other Sculptform product please visit sculptform.com or email support@sculptform.com