

The background of the cover is a photograph of a modern building facade. It features a series of vertical, light blue-grey metal blades of varying heights, some of which are curved. These blades are mounted on a light-colored concrete wall. The sky is a clear, pale blue. The overall aesthetic is clean and architectural.

Sculptform Facade Blades

Installation Guide

IMPORTANT

This installation manual is intended to provide information that will enable designers, builders and owners to execute their projects effectively. Not all project types, design requirements and installation scenarios will be covered. The Sculptform team are happy to assist with project-specific solutions by contacting us on 1800 008 828 or emailing support@sculptform.com.au.

Product recommendations throughout the manual are based on proven performance, however this does not mean that alternative uses are not possible. Differing expectations of what is considered "good performance" will vary, and Sculptform takes no responsibility for what may be considered "product failure." It is important for designers, builders and owners to fully understand the product before making final selections.

It is the responsibility of designers, builders and owners to ensure that the information in this manual is current, by checking with Sculptform or referring to our website sculptform.com.au. As new technology is introduced or industry standards are altered, Sculptform reserves the right to alter existing specifications and delete product without notice.

The use of this manual does not:

- › guarantee acceptance or accreditation of a design, material or building solution by any entity authorised to do so under law;
- › mean that a design, material or building solution complies with the National Construction Code; or
- › absolve the user from complying with any local, State, Territory or Government legal requirements.

Taking delivery

After being tallied and quality checked, each order is carefully packed, strapped and shrink wrapped. Our logistics department then arrange transport directly to your job site.

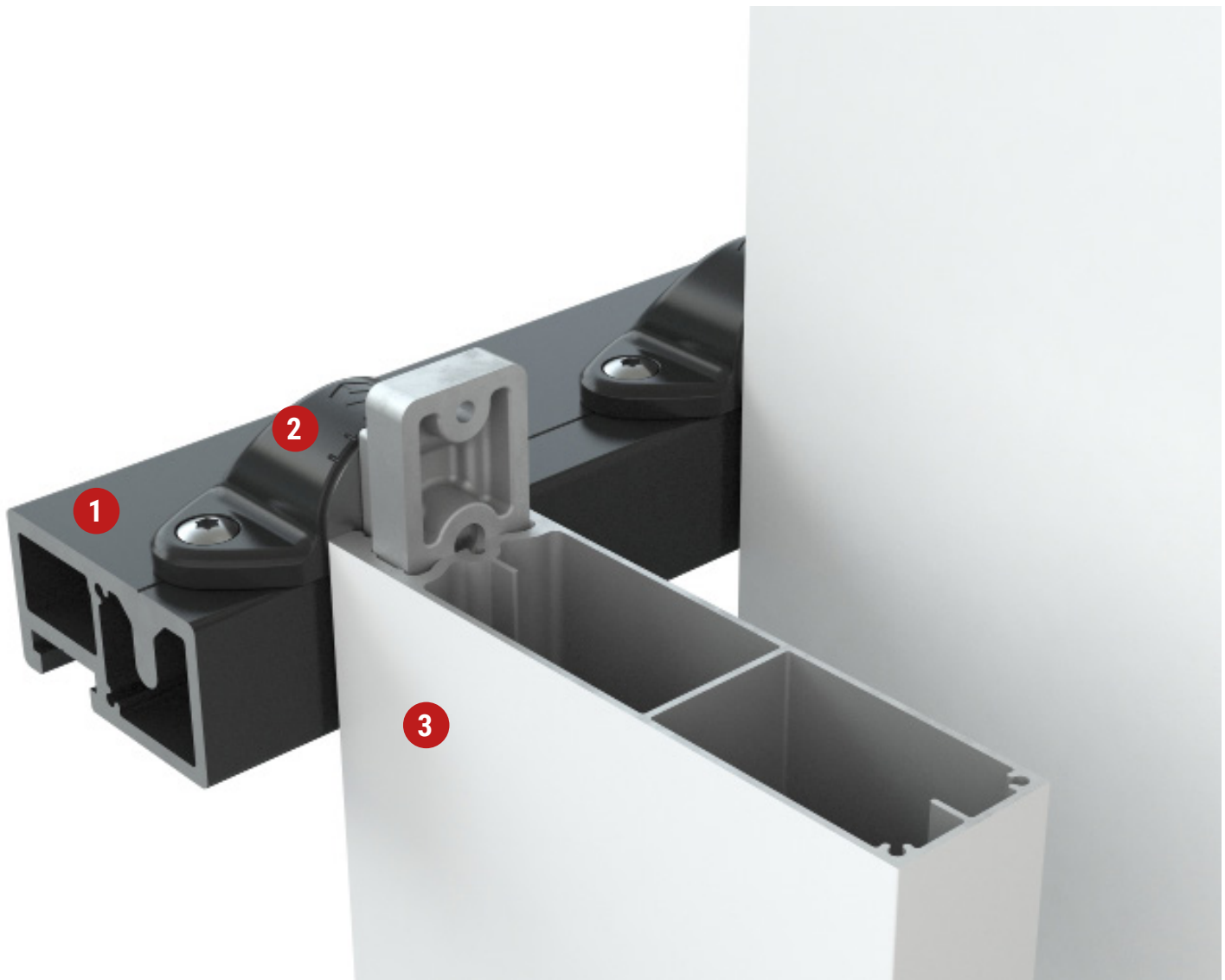
The following steps should be taken when accepting delivery:

1. Check against the consignment note that you have the correct quantity of packs.
2. Assess the overall condition of the packs. If there is any damage it should be recorded on the delivery document which is returned to the driver and the supplier must be notified immediately.
3. Find the packing slip which will be in a plastic sleeve on one of the packs. Check that every item is there and that the quantity is correct.
4. Do a quality check.
5. Notify Sculptform within 7 days of delivery if any items are out of specification.

IMPORTANT

This document is based on the standard install of our Facade Blade system and is not specific to your project. All Facade Blade projects should be engineered to take into account wind loads, spans etc.

The Facade Blade System



1. Mounting rail

Can be coloured to suit your needs and is available in the following size:

- 50x50mm (for direct fix application)

2. Blade mounting bracket

Available in two types:

- Standard
- Multi-axis

3. Blade

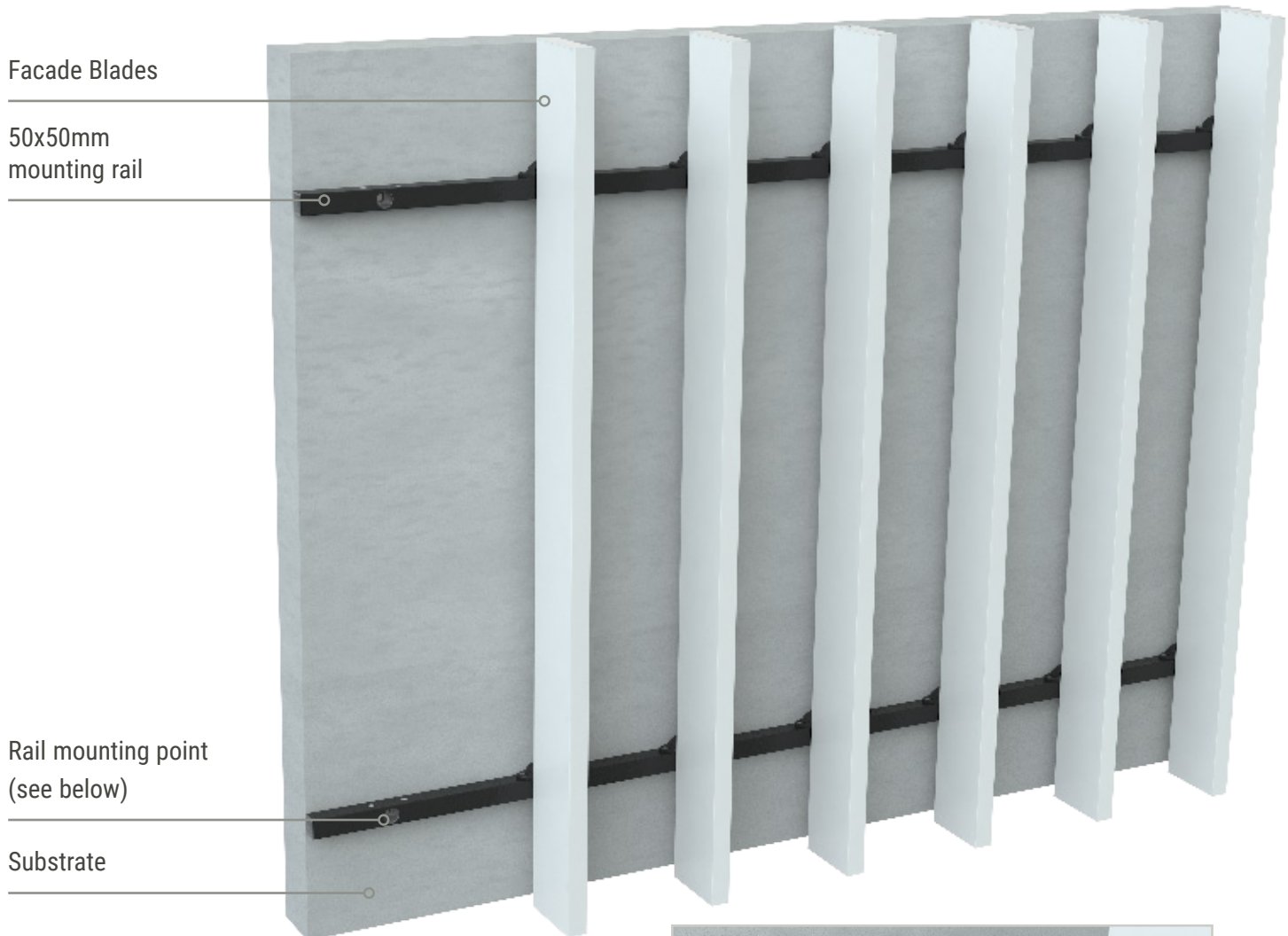
Extruded aluminium available in the following sizes:

- 50x150mm
- 50x200mm
- 50x300mm
- 50x100mm
- 100x150mm

Facade Blades Install Procedure

Direct fix - 50x50mm mounting rail

50x50mm mounting rail is suitable to be fixed to pre-cast concrete, blockwork or to piggyback off a steel structure. The maximum span between rail fixing is 800mm to 1200mm depending on your project requirements.



Standard mounting rail specifications

- Aluminium extrusion
- Approx 3.8m lengths (Project specific)
- Powder coated matt black

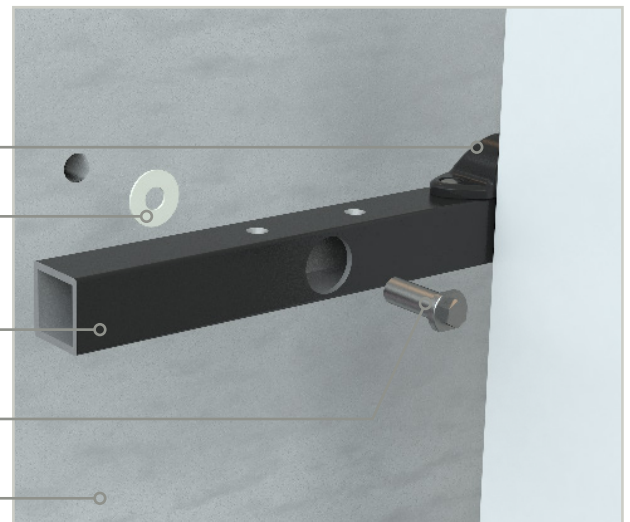
Blade bracket

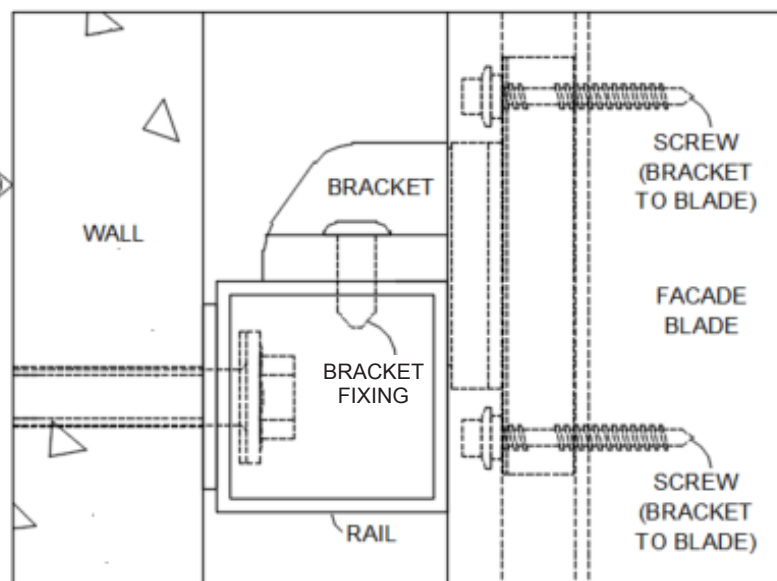
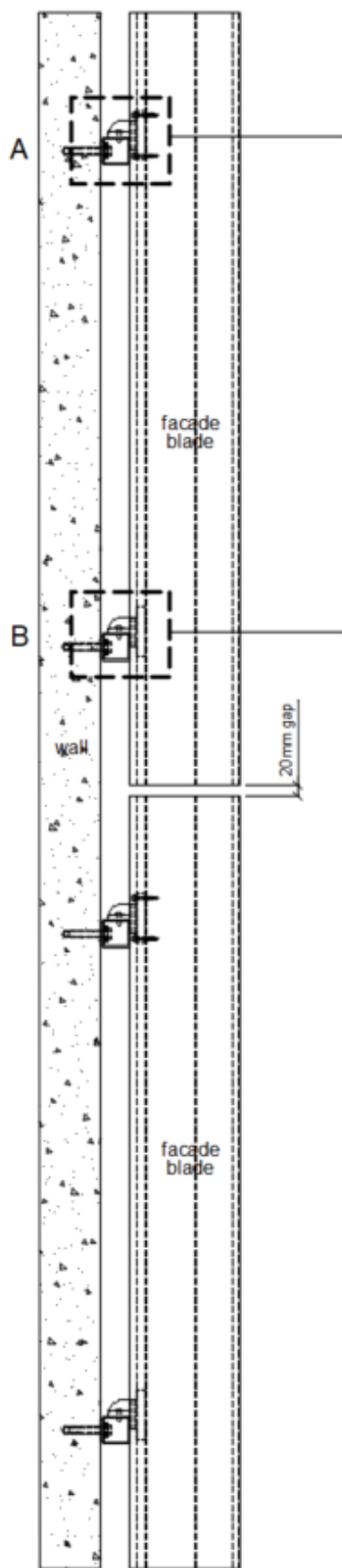
Packing washer

50x50mm mounting rail

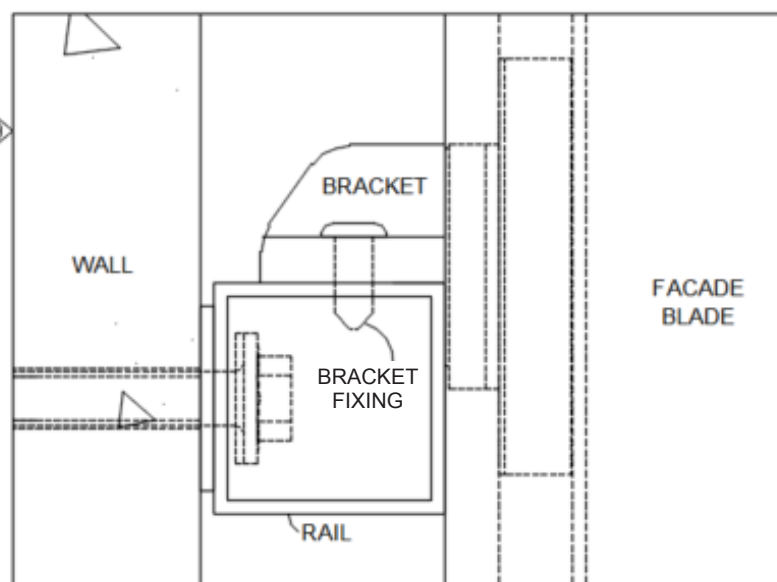
Fixing

Substrate





DETAIL A
(CONNECTION OF BLADE TO RAIL TO WALL)
SCALE 1:2

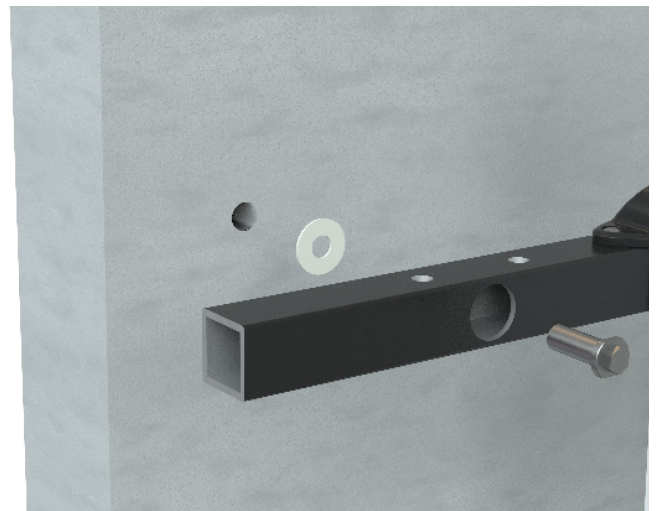


DETAIL B
(CONNECTION OF BLADE TO RAIL TO WALL)
SCALE 1:2

BLADE CONNECTION
SCALE 1:15

Setting up mounting rails

1. Set up the RL (reference line for rail height) for the specific rail. If no RL, pick a line 200mm up from the lowest point of the finished Facade blade and chalk it. **The important thing is for it to remain straight and level.**
2. Determine the desired position of the first blade considering your length of wall and desired last blade position.
3. Place the rail on the wall and mark/ predrill the holes for the fixings. Normally this would be between 800-1200mm horizontally, however it is dependant on the engineering requirements.
4. Drill the marked holes and fit the rail with the correct fixings.
5. Next, continue the process up the wall and fit to the required spacings (depending on engineering requirements). Ensure when fitting rails that the bracket mount holes are also vertically aligned and the face of the rails are plumb.
6. Continue mounting rails along the wall horizontally allowing for expansion gap between them of 5mm.

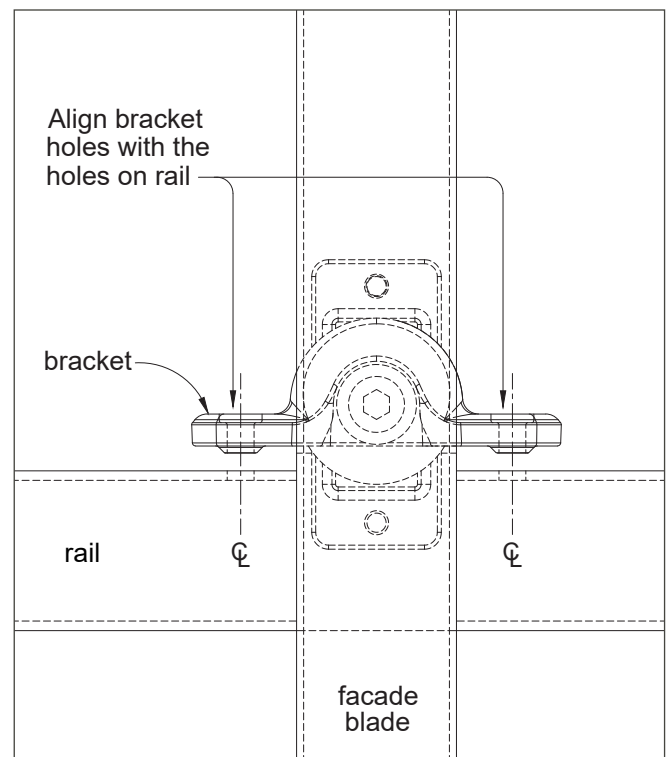
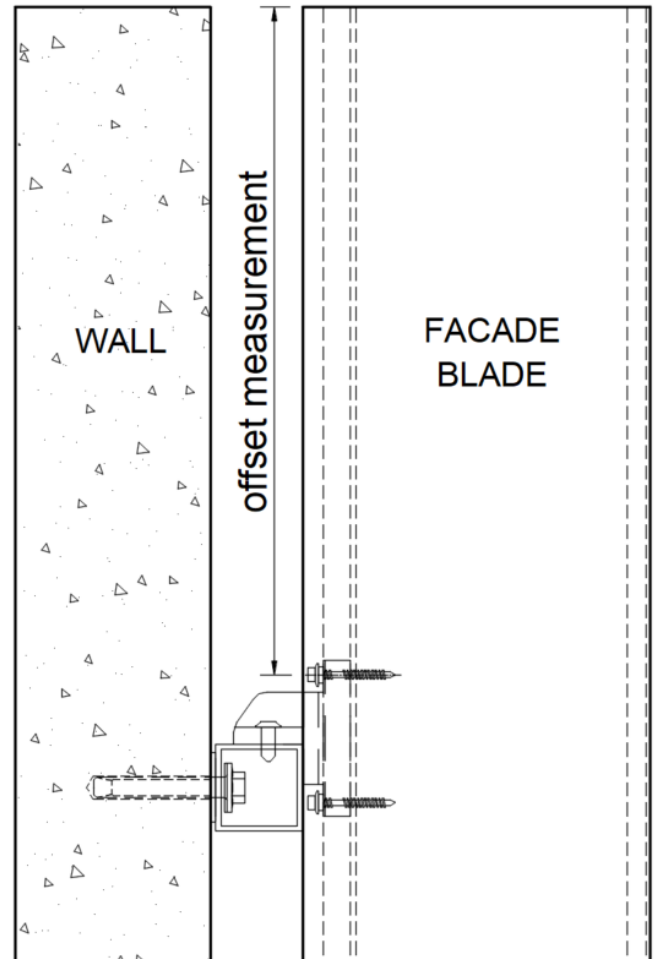


Fitting Facade Blades

1. Measure the blade and work out the height you need it to finish on.
2. Measure down to the first rail from the top of the blade, this is now the offset to mount the top bracket.
3. Mark the offset on the blades and slide the Façade blade brackets into the t-slot in the back of the blade.
4. Fix/Screw the top bracket at the offset mark from earlier, using the Blade Stop Screws supplied.

Note: Prior to screw fixing, a pilot hole must be drilled to reduce the risk of snapping the stainless steel screw when securing the bracket.

5. Fit the top end caps only.
6. Slide additional bracket/s (One bracket per rail) into the bottom of the blade and screw on bottom end cap.
7. The lower bracket can remain sliding in the back of the Facade blade, this is to allow the blade to move as needed due to thermal expansion. The top bracket will support the dead load of the Facade Blade, whereas the lower bracket will just counter wind load and deflection.
8. Lift the blade into position, aligning the holes in the bracket with the pre drilled and counter sunk holes in the top of rail.
9. Fix the bracket to the rail with the supplied Bracket Mount Fixing, working from the top bracket down.
10. Continue fitting blades using the process above.





Head Office
9 Gray St, Golden Square
VIC 3555 Australia

United States
19615 Russell Rd
Kent, WA 98032
T 206 347 4003

Melbourne Design Studio
50 Queen St, Melbourne
VIC 3000 Australia

United Kingdom
1 Old Street,
London EC1V 9HL
T 0300 1100 888

T +61 3 5446 0100
E support@sculptform.com
W sculptform.com

New Zealand
373 New North Road
Kingsland, Auckland 1021
T 027 220 8173